



STEWARDSHIP PARTNERS

2006 Annual Report

Helping Landowners Preserve the Environment

Letter to Our Supporters

February 28, 2007

Dear Stewardship Partners Supporter,

We are pleased to share our 2006 Annual Report with you. Your contributions made 2006 a most productive year for the organization. Our income last year was \$435,266, with one-third coming from individual donors and two-thirds from foundations. We matched this income with \$60,000 of in-kind support from businesses and the communities in which we work. Because of the leveraging ability we have, over 80 percent of the budget was spent on projects and project-related services.

Stewardship Partners and its board of directors approved a three-year strategic plan (2006–2008) at the end of 2005. The vision and goals of the plan continue to prove extremely valuable as we navigate through the challenges of operating a successful organization. A summary of the plan is attached.

We are having great success working with private landowners conducting a variety of on-the-ground restoration activities in the Snoqualmie Watershed. Our Salmon-Safe marketing and labeling program is expanding into new communities across the state. Our initial planning efforts in the Nisqually are serving as the foundation for work on sustainable building projects with private landowners. We include updates on each program in this report.

Our board and staff continue to be strengthened. As you will read in the enclosed newsletter, we added a new contract staff member, David Hymel who is the project manager for the Sustainable Building Program, and, new board member Peter Dykstra. We also maintain a full-time Snoqualmie restoration crew managed by valley resident, Brian Reese.



Snoqualmie River

More detailed information on projects can be found at our updated website: www.stewardshippartners.org.

We trust you will recognize the value of your contribution to Stewardship Partners and hope you will continue to support our efforts. Your partnership is greatly appreciated. If you have any questions, please contact David Burger at (206) 292-9875.

Sincerely,

Chris Bayley
Chair

David J. Burger
Executive Director

**Stewardship Partners helps private landowners restore and preserve
the natural landscapes of Washington State.**



MISSION

Stewardship Partners helps private landowners restore and preserve the natural landscapes of Washington State.

We do this by promoting and implementing incentive-based programs that encourage landowners to participate in fish and wildlife conservation and restoration activities while simultaneously meeting their economic needs through sustainable land management.

VISION

Washington's natural landscapes are best preserved by those who own and control private land. Our long term vision is that it will be economically feasible, viable, and sustainable to do so as a common practice.

GOALS

1. Assist landowners in accessing resources (financial, technical, political/relationship management, marketing/recognition/PR, etc.) for restoration and preservation of their land.
2. Develop and implement incentive-based conservation tools (markets, recognition, funding, etc.) for a variety of private landowners to implement environmental stewardship.
3. Promote best management practices and sustainable resource management with private landowners.
4. Create partnerships with organizations, businesses, landowners and other NGOs to synergize efforts, avoid duplication, and leverage resources to better accomplish our mission.
5. Advance our approach of collaborative conservation to raise awareness of this effective method for conserving the environment.



BOARD OF DIRECTORS

Chris Bayley, Chair
Former King County Prosecutor

Bill Bryant,
Secretary/Treasurer
Chairman
Bryant Christie, Inc.

Steven Buri
Executive Director
Discovery Institute

Eugene Carlson
Dow Jones & Co. (ret.)

Peter Dykstra
Washington State Director
Trust for Public Land

Craig Gannett
Partner
Davis Wright Tremaine LLP

Will Hartmann
Chief Operating Officer
Alphabet Lane, Inc.

Grant Jones
Founding Principal
Jones & Jones

Dana Rasmussen, Vice Chair
Former Regional Director
U.S. Environmental
Protection Agency

Rick White
Former US Representative
Washington, First District
Chief Executive Officer,
TechNet

STAFF

David J. Burger
Executive Director

Larry Nussbaum
Program Director

Joanna Crocker
Office Manager



Snoqualmie Stewardship Program

The Snoqualmie Watershed contains a productive agricultural valley that serves as an important resource for Seattle and Puget Sound residents, yet is increasingly threatened by urban growth. Through our Snoqualmie Stewardship Program, we are working with agricultural landowners to promote voluntary and incentive-based tools for conservation that help protect and restore fish and wildlife habitat while also supporting farmland preservation and a viable agricultural economy.



Full Circle Farm



Volunteers plant trees

2006 Accomplishments:

- Built the portfolio of landowner-based projects to include 12 properties. Restoration projects included 3 miles of riparian habitat, removing a fish blockage that will open up $\frac{3}{4}$ miles of fish habitat, reconnecting a productive side-channel to the river, protecting eroding sections of river bank, and restoring a one acre wetland.
- Raised over \$200,000 in cost share or direct payment funds from various government programs and non-governmental funding sources to implement on-the-ground restoration activities.
- Hired and managed the Snoqualmie Restoration and Maintenance Crew, consisting of 4 to 6 workers with preference given to Snoqualmie Valley residents.
- Conducted outreach to landowners throughout the valley to assess restoration opportunities and link them with available resources.
- Promoted Snoqualmie Valley farms through the Salmon-Safe certification and marketing program.
- Educated a broad-based constituency both in rural King County and metropolitan Seattle on the importance of the Snoqualmie Valley for habitat and open space as well as a local food source. This was done by attending relevant workshops, forums, and conferences and hosting several tours that showcase our work with participating farmers.
- Administered the Environmental Discovery Program at Oxbow Farm, successfully delivering hands-on environmental education to over 300 elementary school students.
- Strengthened collaborative partnerships with several area groups and agencies such as King Conservation District, King County Department of Natural Resources and Parks, Stilly-Snohomish Fisheries Enhancement Task Force, Ducks Unlimited, Washington Trout, and Washington State Department of Fish and Wildlife to achieve the above results.
- Participated in policy discussions and planning forums to ensure that our work is integrated with regional environmental planning processes.



Salmon-Safe Program

Salmon-Safe certification is a market-based conservation mechanism to recognize farm producers in a variety of agriculture sectors (e.g. fruit, produce, dairy, wine) who adopt water quality and habitat conservation practices benefiting native salmon and overall watershed health. The Salmon-Safe seal of approval offers credibility, exposure, and new marketing opportunities for participating farms. Beginning in 2004, Stewardship Partners has partnered with the Oregon-based Salmon-Safe, Inc. to bring the program to Washington State, recruiting farmers into the program, providing marketing support to participating farmers, educating a broad range of citizens and interest groups, and linking participating farms with the resources available to conduct on-the-ground restoration and implement Best Management Practices.



2006 Accomplishments:

- Expanded the program to include 30 agricultural producers certified as Salmon-Safe. This includes producers throughout Puget Sound as well as two vineyards in Eastern Washington. Wilcox Farms, a major regional distributor of eggs and dairy, became the largest farm to become Salmon-Safe certified.
- Developed partnerships with locally based organizations including Regional Fisheries Enhancement Groups, Conservation Districts WSU Cooperative Extension, and others.
- Produced marketing and promotional materials including farm signs, farm stand banners, and point-of-purchase materials.
- Implemented a successful eight-week long retail campaign with PCC Natural Markets in Seattle.
- Promoted certified landowners through a series of print ads, transit bus-side ads, and public radio underwriting.
- Conducted a media outreach campaign resulting in coverage in regional and national newspapers including the *Seattle P.I.*, *LA Times*, *New York Times*, *Tacoma News Tribune*, *Olympian*, and others as well as feature news stories on King 5 TV and Q-13 News.
- Staffed an educational table/display at farmers-markets, festivals, conferences and other relevant public events.



Nisqually Stewardship Program

From Mount Rainier to the Nisqually Delta on Puget Sound, the Nisqually Watershed is one of Washington State's most functionally intact watersheds. Over the past three years, Stewardship Partners has worked with locally based organizations and stakeholders to develop the Nisqually Stewardship Plan. The plan consists of a suite of landowner-based conservation programs that preserve the ecological integrity of the watershed while promoting an economically viable and environmentally sustainable economy.



Jim Wilcox of Wilcox Farms, David Burger of Stewardship Partners and Billy Frank Jr. of the Northwest Indian Fisheries Commission at Wilcox Farms

Photo: NarrativeLab.com/NFWF



Nisqually Delta

2006 Accomplishments:

- Published final version of the Nisqually Stewardship Plan
- Hosted a public event in Seattle to celebrate the release of the Plan. At the celebration event, former Governor Dan Evans awarded the first Daniel J. Evans Nisqually Stewardship Award to Nisqually Tribal Elder and Chairman of the Northwest Indian Fisheries Commission, Billy Frank Jr. This award will be given once every five years to honor an individual or organization that has demonstrated exemplary leadership in the stewardship of the basin.
- Launched the Sustainable Building Program to assist landowners, builders, and developers apply Low Impact Development (LID), green building, and architectural guidelines in the watershed.
- Created scholarship program for small forest landowners to join Northwest Certified Forestry (NCF), a program of the Northwest Natural Resource Group. NCF provides landowners with forest management assistance, marketing services, and Forest Stewardship Council (FSC) certification.
- Established a partnership with Wilcox Farms that led them to becoming the largest farm operation to be certified as Salmon-Safe. Through collaboration with Wilcox, the Nisqually Indian Tribe and the Nisqually River Council, an important reach of the Nisqually River was restored.
- Provided on-going support to the Nisqually River Foundation to build their capacity and begin implementation of the Nisqually Stewardship Plan.



Sustainable Building Program

There is great momentum in the sustainable or green building movement in the Puget Sound area, resulting in improved energy efficiency, sourcing of sustainable materials, and decreased use of toxic substances. Stewardship Partners is building on these efforts to incorporate storm water management in the development of residential and commercial sites, one of the most pressing concerns for the water quality of Puget Sound. We are promoting Low Impact Development techniques that protect the natural hydrological function of a site to allow water to infiltrate the ground instead of flowing off impervious pavement into storm drains and local waterways. This project builds on the Nisqually Glacier to Sound Stewardship Corridor project, where we facilitated LID guidelines along with the Nisqually Stewardship Plan, outlining voluntary conservation opportunities for private landowners.



Low Impact Development design

LARGE LOT LOW IMPACT SITE FEATURES

- # PIN FOUNDATION TECHNOLOGY
- # SPLASH BLOCKS
- # RAINFALL BASINS (CISTERNS)
- # NATIVE TREES AND SHRUB PRESERVATION
- # PERVIOUS OUTDOOR LIVING SPACES - DECKS/PATIOS
- # PERVIOUS WALKWAYS AND DRIVEWAYS
- # OPEN CONVEYANCE OF STORM WATER
- # RECOGNITION/RETENTION - RAIN GARDEN - BIO-SWALE

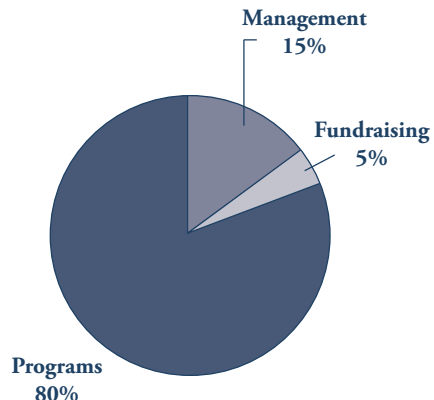
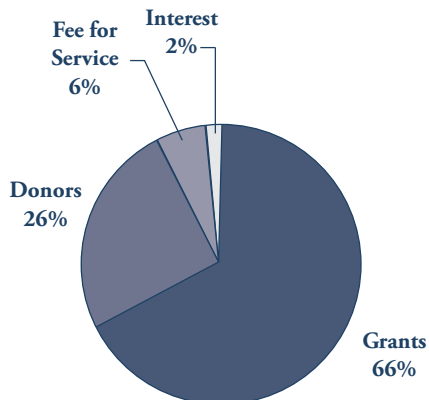
- Finalized Nisqually Low Impact Development Guidelines.
- Produced and distributing LID brochure to Nisqually area stakeholders.
- Expanded the scope of program to cover central Puget Sound region, broadening the contacts and partnerships to include Master Builders Built Green program, Puget Sound Water Quality Action Team, and several developers in King and Kitsap counties.
- Conducted over 20 presentations/meetings with local municipalities, state agencies, watershed councils, builders/developers, and non-governmental organizations related to stormwater management issues and LID opportunities.
- Liaised with “green” building professionals to discuss incorporating site development /LID guidelines into green building programs.
- Identified 3 LID pilot projects including a planned community, an individual home, and a retrofit of an existing housing development.
- Initiated an extensive outreach campaign with Thurston and Pierce County Public Works to monitor and encourage sustainable building on over 8,000 parcels in sensitive areas within the Nisqually Watershed.
- Worked closely with the town of Eatonville to successfully incorporate current LID best management practices into their site development ordinance.



Financial Report

For the 12-Month Period: January 1, 2006 to December 31, 2006

The financial report for Stewardship Partners shows the organization continues to be in good financial condition, thanks to the generous support of our donors and foundations.



PUBLIC SUPPORT AND REVENUE:

Grants	\$289,043
Individual Donors	\$111,712
Fee for Service	\$26,862
Interest	\$7,649

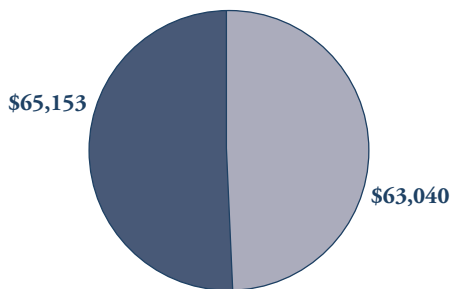
TOTAL \$435,266

EXPENSES:

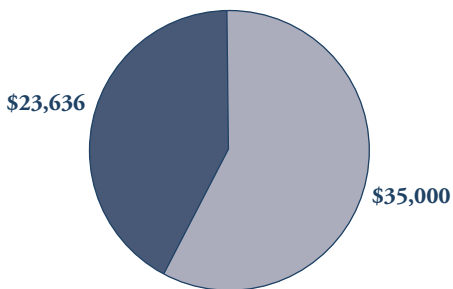
Management	\$68,655
Fundraising	\$20,403
Programs	\$348,561

TOTAL \$437,619

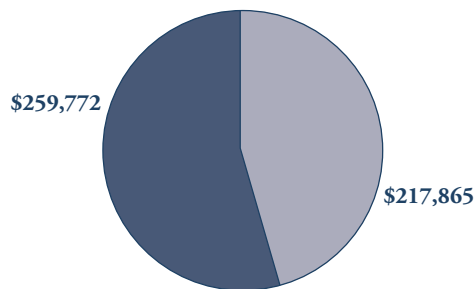
BREAKDOWN BY PROGRAM



Income	\$63,040
Expenses	\$65,153



Income	\$35,000
Expenses	\$23,636



Income	\$217,865
Expenses	\$259,772

These displays reflect cash basis accounting. Apparent deficits have been eliminated by receipts following the close of books at year end. Stewardship Partners is a nonprofit, 501(c)(3) corporation. FEIN: 91-1939506. If you would like a copy of our most recent 990 form, please contact us at (206) 292-9875 or send an email to info@stewardshippartners.org

Stewardship Partners

recognizes these generous donors

JANUARY 2006 – DECEMBER 2006

BUSINESSES & FOUNDATIONS

Burning Foundation
Compton Foundation
Davis Wright Tremaine
King Conservation District
King County Dept. of Natural Resources and Parks
Laird Norton Foundation
Mentor Law Group
J. Michael Kaiser CPA
Microsoft Gift Matching
The Mountaineers Foundation
National Fish and Wildlife Foundation
New York Times Matching Gift
Norman Archibald Foundation
Patagonia Foundation
Plum Creek Foundation
Raven Foundation
Sequoia Foundation
Shared Strategy
Snoqualmie Watershed Forum



SUSTAINING PARTNERS

\$5,000 OR MORE

Tom Alberg & Judi Beck
C.T. Bayley Family
Mike and Lynn Garvey
Stone Gossard and Liz Weber
Michael Murr
Bill and Sally Neukom
Nancy Nordhoff
John Rabel
John Stanton and Terry Gillespie
Maryanne Tagney-Jones
Mark and Susan Torrance

\$2,500 TO \$4,999

Alan Black
Steve and Erica Gerlicher
Pete Higgins
Guy and Nancy Pinkerton
Jon and Judy Runstad
Paul Brown & Margaret Watson

\$1,000 TO \$2,499

Anonymous
Bruce and Ann Blume
Ed & Betty Bottler
Bill Bryant & Barbara Feasey
Eugene Carlson
Richard & Lauren Donner
Mrs. Ruth Dunn
Lyn & Gerald Grinstein
William C. Hartmann
Joe and Marie Mentor
Bruce & Jolene McCaw
Dale Miller
Glen and Alison Milliman
L.T. Murray III
Bruce Nordstrom
Linda Nordstrom
Thomas O'Leary
Peter Overton
Franklin Raines
Heather & Eric Redman
Bill & Jill Ruckelshaus
George & Susan Swindells
Robert E. Story
Peter Van Oppen
Doug & Maggie Walker
Walter Weber Jr.
Rick White
Bruce Williams & Gro Buer
Martha Wyckoff & Jerry Tone

SUPPORTING PARTNERS

\$500 TO \$999

Kenneth Bartels
Thomas Bayley
Bill & Mary Black
Kathryn Alvord Gerlich
Slade Gorton
Louise Miller
Dana Rasmussen
Sievert Rohwer Family
William Wurts

\$499 AND BELOW

Peter & Kit Archie
Dragos & Emily Axinte
William Bardeen
Emery Bayley
Douglas Beighle
John Bloxom, Jr.
Herbert Bridge
Steve Buri
David Burger
Bruce Chapman
Kathryn Conroy
Patrick & Susan Dunn
Gene Duvernoy
Peter Dykstra
Phillip Frink
Craig Gannett
Mark Johnsen
Grant Jones
Diana M. Kirchheim
Jeremy Korst
Charles Mansfield
Ann Marie & Gene Marans
Terry McCarthy
Chuck Nordhoff
Don Padelford
John Pilcher
Bruce Reed
Tim Rich
Aaron Richmond
CD "Cully" Stimson
Parker & Evelyn Stroufe
Edwin & Kathryn Sterner
John Taylor
Margaret Taylor
Fred Whitridge
Mark Sidran & Anais Winat

1411 4th Avenue, Suite 1425, Seattle, Washington 98101
Phone: 206.292.9875 Fax: 206.292.9876
Email: info@stewardshippartners.org
www.stewardshippartners.org

STEWARDSHIP PARTNERS



Helping Landowners Preserve the Environment